



sharing the bread of life with the hungry world

bethlehem lutheran church *newsletter*

Volume 48, Issue 7 July 2019



Evangelical Lutheran Church in America
God's work. Our hands.



Summer Renewal

God gifted us with sunshine, warm weather, and birds singing last month as we began our summer services outdoors. Summer is a time for refreshment and renewal physically, emotionally and spiritually as we have many more opportunities to be outside and enjoy God's creation. Take time to savor this season and keep one's eyes, ears and heart open to see the Spirit of God moving and making all things new.

In July, we continue to celebrate the season of summer by integrating different summer Spiritual Practices to nourish our soul, whether you can be with us at worship on Sunday morning, or vacationing in another part of God's world. The

Spiritual Practices in July to guide our summer days include:

July 7-13 Play... Take time to celebrate life and find a moment to play in God's creation. Join us for the church picnic on July 7, help with Vacation Bible School, take a child to the park or visit a park, watch children laugh and play or swing on a swing!

July 14-20 Peace with Meditation... Find a place either in your home or imagine yourself at a favorite place that gives you peace. Pray for peace in your own life, for others, and for the world. Jesus said, "Peace I leave with you; my peace I give you. I do not give to you as the world gives." John 14:17a.

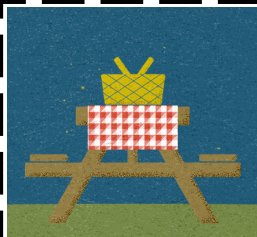
July 21-27 Prayer Walk... Come to church and walk the labyrinth. Walking the labyrinth can be a sacred walk to discover inner sacred space and provides one a time to be open to the Spirit's movement.

July 28-August 3 Listening-Lectio Divina... Lectio Divina means "divine reading." It is an ancient practice of praying the Bible. One listens to the text with the "ear of the heart." This spiritual practice has an aim to nourish and deepen one's relationship with the Divine.

May God continue to bless you in this season of growth and transformation.

Have a Blessed 4th of July.

Pastor Audrey



Church Picnic Sunday, July 7

Following 10:30 Worship

Menu: hamburgers, brats, hotdogs, potato salad, beans, chips, cookies and drink

FREE to everyone; all are invited!

VACATION BIBLE SCHOOL

July 7-11, 2019

PreK - 5th grade

Sunday, July 7

12:15-1:45pm

Picnic - 11:30am

Monday-Thursday

July 8-11

6:00-7:30pm

Supper - 5:30pm



At Roar VBS, kids, PreK-5th grade, discover that even though life gets wild, God is good! Roar is filled with incredible Bible-learning experiences kids see, hear, and touch. Kids will participate in team-building games, cool Bible songs, and awesome crafts that help faith flow into real life! Please join us!

Register at: <https://forms.gle/Pse8nkcDKE6Y3Jj78>

Volunteer at: <https://forms.gle/dCfaHjKRN8j1tK36>

Paper registration and volunteer forms are located on the Welcome Table in the Church Lobby. ??? Contact Amber Halvorsen, 610-7301.

CALL COMMITTEE UPDATE



The Call Committee has begun the process of calling the next pastor at Bethlehem Lutheran Church. Committee director positions are as

follows: Chair - Erica Nelson, Secretary - Theresa Elverum, and Communications Co-Chairs - Paul Rea and Sabrina Leistikow. The committee divided up the sections of the Ministry Plan Profile to complete in the next few weeks. It was agreed that an aggressive timeline for completion of the call process would be best for the congregation. Call Committee will present the Ministry Profile document to the congregation Sunday, July 7, 9:45am, in the Fellowship Hall.

Members are welcome to nominate a pastor. Pick up a form on the Welcome Table in the Church Lobby.

??? Contact a member of the Call Committee.



OFFICE CLOSED Thursday, July 4 and Friday, July 5.

The Staff wishes everyone a safe 4th of July! Enjoy the holiday.



QUARTERLY MEETING

SUNDAY, JULY 21, 9:45am in the Fellowship Hall.

GOD'S PLAYGORUND

Kids of all ages, even parents, and grandparents, are invited to play in the park, 6:00pm, every Wednesday evening. Adults can visit while kids play. Come ready to also reflect on places you've experienced God in the week. ??? Contact Kari Rea.

- † July 3 - No God's Playground
- † July 10 - VBS
- † July 17 - Tourist Park
- † July 24 - Hartman Reserve
- † July 31 - Lookout Park



We are looking for people who are willing to be part of a planning group to explore ways members of Bethlehem can participate in the ELCA's "God's Work, Our Hands" Sunday in September. See Pastor Audrey for more information.



Sharing the Bread of Life with a Hungry World.



THANK YOU to everyone who contributed items or shopped at our annual garage sale. We raised \$2,818.50 for Riverview Center, the Cedar Bend Humane Society, Northeast Iowa Food Bank, and Friends of the Family. A special thank you to several volunteers who spent many hours helping to set up our sale and working the day of the sale. It was truly a group effort.



THANK YOU FOR THE FOOD DONATION

Bethlehem Lutheran Church donated 180 pounds of food to the Northeast Iowa Foodbank in the month of May. This turns into 128 meals for families. The Northeast Iowa Food Bank Elderly Program provides meals to senior citizens. Every year the program distributes over 14,600 weekend bags and 8,100 monthly boxes of food to over 1,300 senior citizens in need throughout northeast Iowa.



We are grateful for the gift of \$415 from Bethlehem Lutheran Church to ELCA World Hunger.

To feed the hungry is a command from the mouth of Jesus and hallmark of what it means to be Christian. It is also exciting work as we see the ELCA work to create sustainable solutions to world hunger including malaria nets, wells that offer clean water, micro loans and so much more.

To learn more about the impact of your gifts please visit elca.org/hunger and "click" on "Our Impact."

Mark A. Anderson
Assistant to the Bishop



LUTHERAN WORLD RELIEF KITS

As you go to garage sales and hit the school sales, please keep Lutheran World Relief in mind.

The earth is the LORD's, & everything in it, the world, & all who live in it.

Psalm 24:1

Please look for gently used size 6-24 month cotton t-shirts, gowns or sleepers without feet; sweaters or jackets and socks. You may also find light weight bath towels (52" x 27" or smaller), hand towels, cloth diapers, and receiving blankets. As school sales begin, please purchase extra spiral notebooks (70 count), 30 centimeter rulers, blunt scissors, 2 1/2 inch long erasers, #2 pencils, ballpoint pens, and 16 or 24 count crayons.

For a complete list of what is needed for school, baby care and personal care kits, there is a list on the Welcome Table or you can go to the church website and find Lutheran World Relief under Ministries.

FUN AT OUR FISHING AND BONFIRE EVENTS!

Everyone had a great time at the Fishing Event at Prairie Lakes. It was a free DNR fishing weekend. We had a few fishers catch some fish. Thanks to Paul Rea for being our fishing expert, helping with the poles, hooks, and bait. We had our Bonfire Supper afterwards. Due to a windy evening, we enjoyed our "after fishing" meal indoors. Thanks to Dave Rogers for being our grillmaster!



Storybook Activity Bags for Kids

**Borrow a story bag,
read the story, do the activities, return the story bag.
Perfect fun for rainy summer days.**

Story Bags for parents, grandparents, and other caring adults to use with children, ages preschool to 3rd grade, are available in the Church Lobby near the Welcome Table for a rainy day or summer quiet time. The green Bethlehem Lutheran Church zipper bag contains a book along with a Bible reference, a devotion, a *Spark* activate faith page, and a prayer square that you can use when praying. Coloring and activity pages and a felt story activity also are included. You can find the name of the story and the recommended age range on the blue tag located on the handle of each bag. There is no checkout process; just be sure to return bags to the volunteer desk in the church office for resupplying. We hope you enjoy them! ??? Contact Julie Alexander, 230-4742.

**COMING
NEXT
MONTH!**

MILESTONES & BLESSINGS

August holds two meaningful celebrations in our Milestones and Blessings Ministry. Our Backpack Blessing will be woven together with the timing of the BLC Service Council's backpack project. Look for opportunities to share school supplies.

At the end of the month we celebrate with our 3-year-olds getting ready for Sunday school. They will get their shell from the Baptism Banner. More information will be in the August newsletter.

IN CASE YOU MISSED IT...



SUMMER FAITH FORMATION IDEAS FOR ALL AGES

Need more fun faith formation ideas for summer? See the display in the Church Lobby for several compact, handy tools for on-the-go worship and faith forming ideas perfect for adults, youth, children, and families.

??? Contact Robin,
robin@bethlehemcfn.net.



BIBLE CAMP BLESSING

Going away to camp provides an opportunity for campers to learn about themselves and have a place apart—a place away from home, school, and extra-curricular activities. Being in nature, developing a community life of faith with peers and camp counselors, exploring the meaning of Christ in their lives and in their world, and experiencing faith through conversations, devotions, and other activities all build upon their faith life.

We invite campers and families to use the **Bible Camp Blessing**, available on the Summer Faith Formation display in the Church Lobby, to build on that faith forming experience. We hope this Milestones 4 Key guide will reinforce faith formation between Bible camp and the home, congregation, and world.



B.L.Y.M.P. & FM4000 NEWS!

Bethlehem Lutheran Youth Ministry Programs & Family Ministry at 4000 Hudson Road



Tuesday, July 16, 5:30pm

Timberledge Neighborhood Pool

Timberledge Drive, Cedar Falls

All are welcome! Come for the food, swimming, or both!

Don't like to swim? That's OK, there'll be plenty of food to share and time to visit with others. **Bring something to grill and a dish to share.** Table service and drink provided.


Love to swim? Jump in before eating and again after. ??? Contact Barb and Scott Davison, 277-6602.



**YOUTH
&
FAMILY
KICK-OFF**

SUNDAY, AUGUST 25

11:30AM



PINTS OF GRACE

Tuesdays, 7:00pm, at Pepper's, 620 E. 18th Street, C.F. We welcome people 18-30 years old, for a soda, beer, or food, as we enjoy fellowship and conversations of faith. ??? Contact Robin Souhrada, robin@bethlehemcf.net.

Volume 19, Issue 12

July 2019

Upcoming Events

Y&F Ministry Mtg.	July 15
BBQ Potluck & Pool Party	July 16
Church Softball	Mondays
Pints of Grace 7:00pm	Tuesdays

BLC SOFTBALL SCHEDULE

Monday Nights

Birdsall Softball Complex
off of West 12th Street

July 1 - 7:30	July 22 - 7:30
July 8 - 6:30	July 29 - 6:30
July 15 - 7:30	Aug. 5 - 6:30

The schedule also may be found on the BLC website and Welcome Table in the Church Lobby. Come cheer for our team!



CHURCH CAMP It's not too late to sign up for camp. Find information on the Church Welcome Table and arrange campership payments with Robin, robin@bethlehemcf.net.

ACOLYTES



ACOLYTES OF ALL AGES

Worship continues during the summer. However, summer is a time when many people take the opportunity to travel and enjoy the beauty of God's creation.

This summer we are trying "something new" with scheduling acolytes. We are looking for families and individuals who might be willing to sign up and be an acolyte as an individual or family unit. The duties include: lighting altar candles, bringing forth the bread and wine (flagon) during the offering, holding the chalice with grape juice during communion and collecting communion cups at the first service. Parents may assist young children in these tasks. Our hope is to have kids of all ages participate in worship. Sign up is with google docs. Contact Kari Rea or the church office to receive the link. If you sign up and have a scheduling conflict, please try to contact another household on the list or call the church office at 266-3541.



BETHLEHEM KNITTERS & FRIENDS

All those able or wishing to knit or crochet prayer shawls and scarves are welcome to join Bethlehem members and friends in the Church Library, Wednesdays, 1:00pm.

WEDNESDAY NIGHT MEALS

Before we know it, Wednesday night ministries will be occurring again. Part of the programming is a weekly meal. We are in need of people who would be willing to prepare and serve a meal or two during the fall. If you would be interested in helping with the meals, please contact Heather at 266-3541, or heather@bethlehemcf.net.



The Joyful Times group for BLC members and friends of the AARP or "empty nester" ages, meets 9:30am on the 3rd Wednesday of each month for coffee fellowship and to plan activities for future months. Our

next outing is **July 17, 1:00pm**, KWVL TV Studio tour. We will eat lunch at a local restaurant. The next meeting is **August 21, 9:30am**. ??? Contact Jerry Mohling, 240-7571.

DO DAY

If you can tie a knot, you are qualified to help at Do Day, **Tuesday, June 11, 9:00am**. All are welcome to meet in the Church Fellowship Hall to tie quilts for Lutheran World Relief. ??? Contact Barb Davison, sbdavison@cfu.net.

BIBLE STUDY IN JULY

Join us on **Thursday** mornings, July 11, 18, 25, to study the texts for the following Sunday.

Choose one of two venues:

Market Place Café at HyVee, 7:30am or Church Library, 11:30am



SPIRITUAL PRACTICES

Something new happening at church during the summer months.

Spiritual Practices will be taught **Sunday morning, 10:00am** (15 minutes), and at a **Bible Study on Thursdays**. All ages welcome. Even if you are gone in a given week, follow us on Facebook. ??? Contact Pastor Audrey, pastor@bethlehemcf.net.

Week	Theme
June 30	Purpose & Meaning Centering Prayer
July 7	Play Vacation Bible School
July 14	Peace Meditation
July 28	Listening Lectio Divina
August 4	Compassion Silence
August 11	Forgiveness Sand and Stones
August 18	Acceptance Yoga
August 25	Praise Dance/T'ai chi
September 1	Creativity Contemplative arts
September 8	Bearing Witness "God's work. Our Hands." - Volunteering

SUMMER READING...Our library has an impressive selection of books available to borrow, from picture books for children, graphic novels for young adults and many choices for adults. Make sure and visit the children's corner in the library. It offers books for babies to young adults, toys for quiet play, games, and drawing materials. Please help us keep this area uncluttered and safe for children to enjoy. In addition, there is always a book cart down by the classrooms and the bookshelf/activity bags in the back corner of the church.



As always, there are Bibles of every type for any age. You are encouraged to borrow any of these books to take home, enjoy, and return!

GIVING WITHOUT A CHECK

Many members in recent years have discovered how easy it is to transfer a one-time gift or make recurring offerings from their bank account or major credit card directly to Bethlehem Lutheran Church.

Our partnership with Vanco Services, a secure giving system, allows you to make your gift to the church and ensures you do not incur fees when you give online or set up an automatic account. Check out our website to see how easy it is to give to God's church: <http://www.bethlehemcf.org/welcome/online-giving/?view=mobile> Another option is to scan the QR code with your smart phone.



Friends in our prairie.



VOLUNTEER

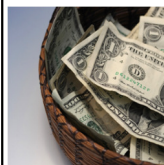
The Altar Guild of BLC is in need of more volunteers. This involves setting up for Sunday communion for the 2 services plus the second service volunteers put away the communion vessels after 2nd service. For 1st service we have a team of 2. Usually the volunteers do this for 1-2 months during the year. If you would be interested, please contact Kathy Timmer, gustimmer@cfu.net, or 610-2241.

ALTAR FLOWERS

There are still openings for donations for altar flowers. Please sign up on the Flower Chart on the bulletin board by the kitchen in the Fellowship Hall. ??? Kathy Timmer, 610-2241.



UNIFIED ACTIVITY MAY 2019



Income: \$148,290 YTD

Expenses: \$146,822 YTD

1,468 YTD

2019 Mission Plan Total: \$363,893

Copies of your financial statement for January-June of 2019 may be picked up at the church during the month of July.



319-226-3541

office@bethlehemcf.net

CHURCH OFFICE STAFF

Audrey Lukasak - Interim Pastor

507-358-6924, pastor@bethlehemcf.net

Robin Souhrada - Director of Faith Formation

robin@bethlehemcf.net

Tina Varney - Office Administrative Assistant

office@bethlehemcf.net

Heather Schneider - Ministry Coordinator

heather@bethlehemcf.net

Diane Bowman - Office Business Assistant

office@bethlehemcf.net



STAY CONNECTED

www.bethlehemcf.org

#blcsharing

LIKE us on Facebook:

[www.facebook.com/pages/](https://www.facebook.com/pages/Bethlehem-Lutheran-Church-ELCA/451552121584266?ref=hl)

[Bethlehem-Lutheran-Church-ELCA/](https://www.facebook.com/pages/Bethlehem-Lutheran-Church-ELCA/451552121584266?ref=hl)

[451552121584266?ref=hl](https://www.facebook.com/pages/Bethlehem-Lutheran-Church-ELCA/451552121584266?ref=hl)



Sunday worship with Holy Communion
8:30am & 10:30am
Nursery available 8:15am-11:45pm
Pastor: Rev. Audrey Lukasak
Church office phone: 319-266-3541
Office hours: Monday-Thursday, 8:00am-3:00pm
Email: office@bethlehemcf.net
Website: www.bethlehemcf.org
****Newsletter deadline: July 15****
Bulletin deadline: 9:00am Thursdays
The newsletter also is available online.



CHURCH PICNIC Sunday, July 7

Following 10:30 Worship

*Menu: hamburgers, brats, hotdogs, potato
salad, beans, chips, cookies and drink*

FREE to everyone, all are invited!

SUMMER SCHEDULE June, July, August

WORSHIP TIMES

8:30am Traditional Service

10:30am Contemporary Service

OFFICE HOURS

Monday-Thursday 8:00am-3:00pm

Closed Friday

Sunday, July 7, 12:15-1:45pm

Picnic - 11:30am

Monday-Thursday, July 8-11, 6:00-7:30pm

Supper - 5:30pm

Kids, PreK-5th grade, will discover that God
is good through all of life's challenges!

Register now: <https://forms.gle/Pse8nkcDKE6Y3Jj78>



VACATION BIBLE SCHOOL July 7-11, 2019

All are welcome!